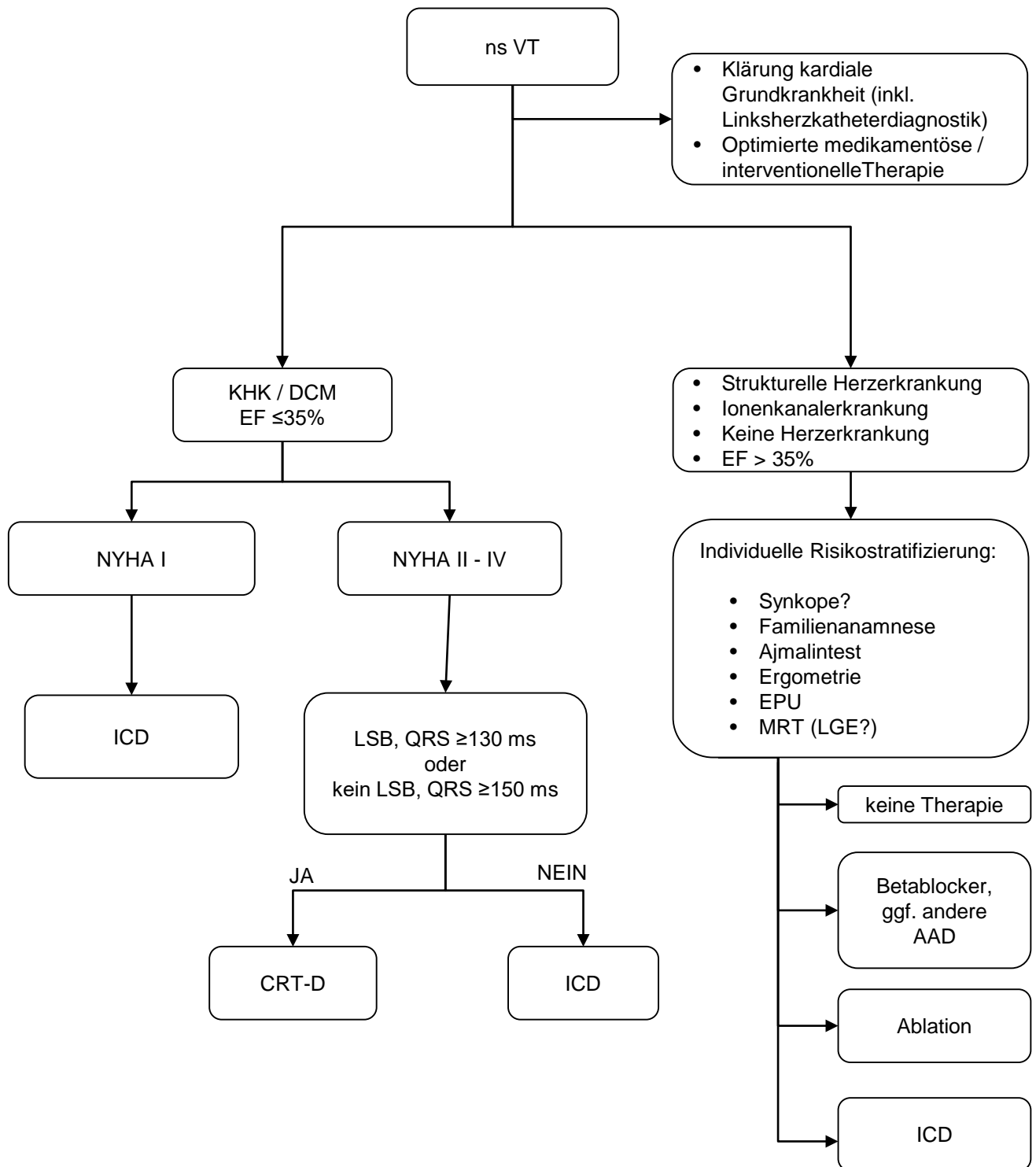
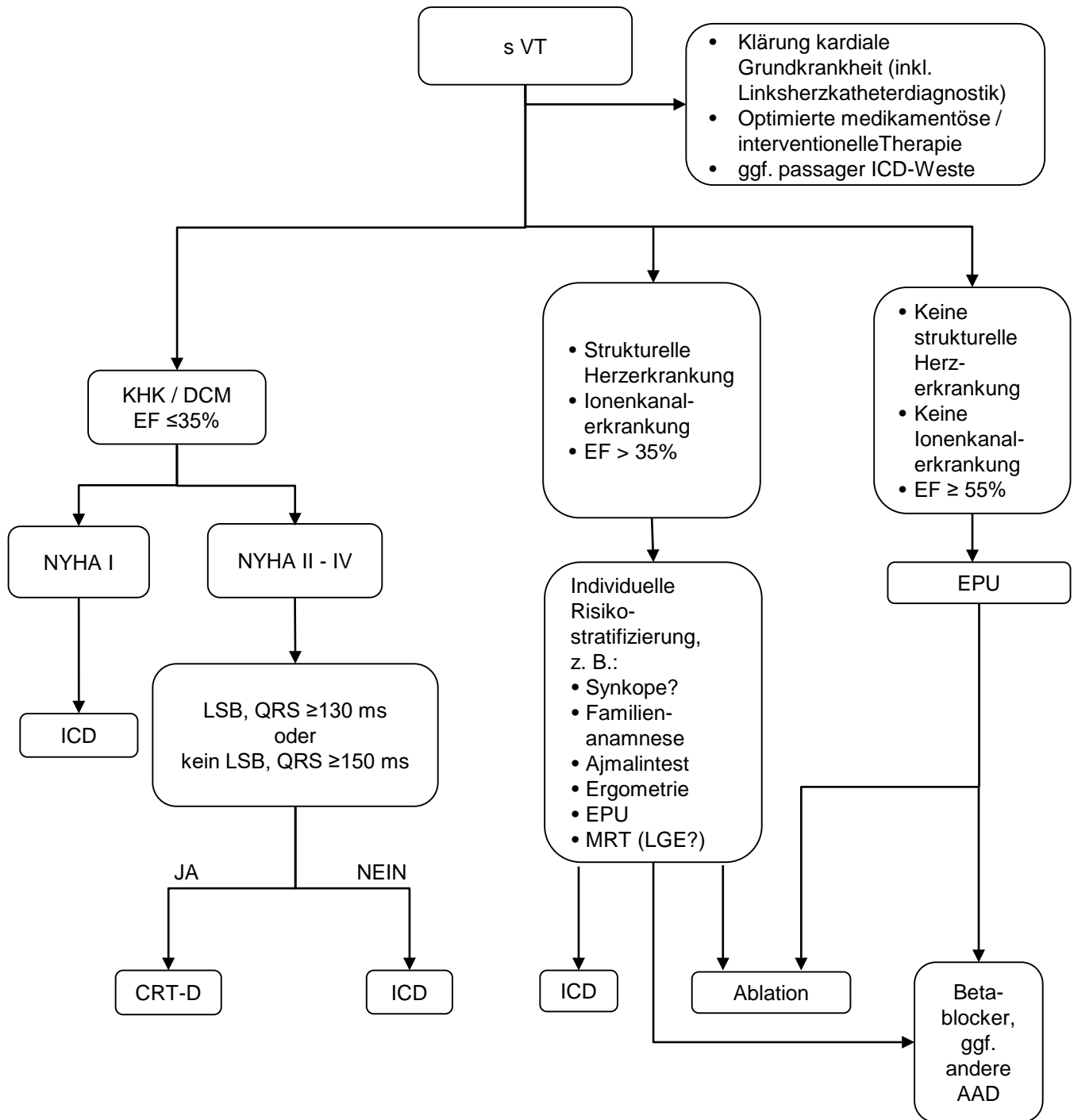


Nicht-anhaltende Kammertachykardie (non-sustained ventricular tachycardia / ns VT)



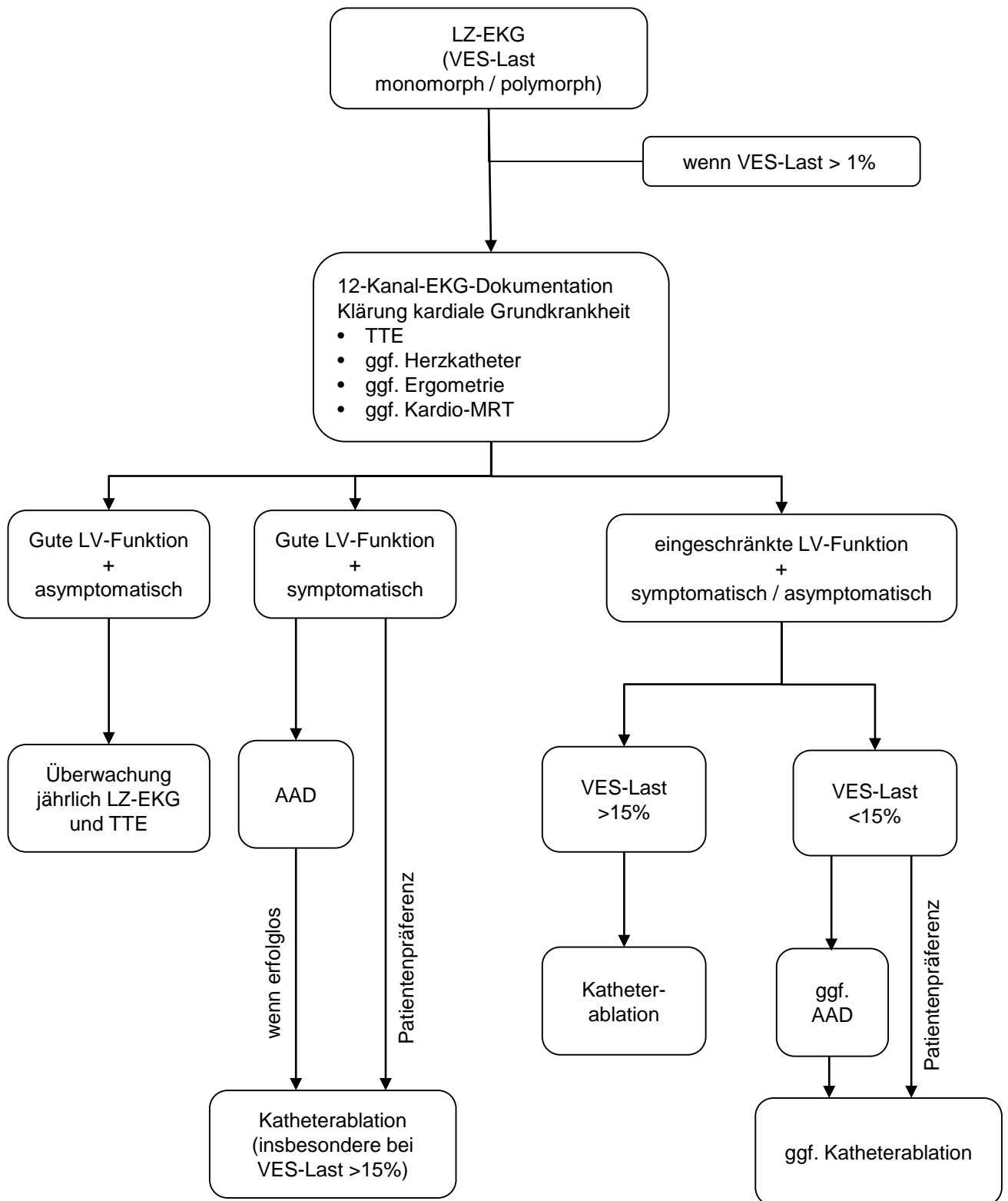
ns VT: non-sustained ventricular tachycardia = nicht-anhaltende Kammertachykardie
s VT: sustained ventricular tachycardia = anhaltende Kammertachykardie

Anhaltende Kammertachykardie (sustained ventricular tachycardia / s VT)



ns VT: non-sustained ventricular tachycardia = nicht-anhaltende Kammertachykardie
s VT: sustained ventricular tachycardia = anhaltende Kammertachykardie

Ventrikuläre Extrasystole (VES)



AAD: Antiarrhythmika (Betablocker, Verapamil, Klasse Ic-AA, Amiodaron in Abhängigkeit von kardialer Grunderkrankung)